

# Flexiform

## Habia Cable's range

### Flexiform

Habia Cable's class-leading, re-formable coaxial cable offers an alternative to semi-rigid cables for frequencies up to 18 GHz.

With many sizes available in both magnetic and non-magnetic (NM) variants, the tin-soaked braid offers outstanding shielding properties, comparable with those of a true semi-rigid cable, but with the added advantages of being able to reposition the cable a number of times during installation.

Conductor	SPC or SCCS
Dielectric	Solid PTFE
Shield	Tin-soaked, TPC braid
Sheath	-
Temp.	-65°C / +180°C

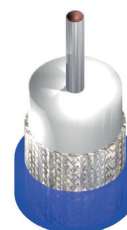


### Flexiform FJ & Flexiform X FJ

Flexiform FJ takes the highly successful Flexiform cable concept and adds a tough, yet thin-wall outer sheath to provide excellent isolation properties whilst maintaining the high temperature performance for an extremely modest increase in size.

Available in both Premium and Standard 'X' variants.

Conductor	SPC or SCCS
Dielectric	Solid PTFE
Shield	Tin-soaked, TPC braid
Sheath	FEP, Blue-transparent
Temp.	-65°C / +180°C

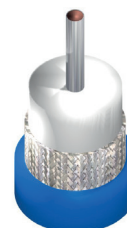


### Flexiform HFJ & Flexiform X HFJ

Flexiform HFJ takes the highly successful Flexiform cable concept and adds a flexible outer sheath to provide excellent isolation properties. Like the FJ variant, Flexiform HFJ is highly flame retardant and also boasts extremely good smoke and fume properties as a halogen free sheath.

Available in both Premium and Standard 'X' variants.

Conductor	SPC or SCCS
Dielectric	Solid PTFE
Shield	Tin-soaked, TPC braid
Sheath	HFS 80 T, Blue
Temp.	-40°C / +80°C



### Flexiform L FJ & Flexiform LX FJ

Flexiform L types use a 'profiled' dielectric to improve the attenuation when compared to the standard Flexiform cable. As with the standard FJ version, Flexiform L FJ provides a tough, yet thin-wall high temperature outer sheath.

Available in both Premium and Standard 'X' variants.

Conductor	SPC or SCCS
Dielectric	Profile-extruded PTFE
Shield	Tin-soaked, TPC braid
Sheath	FEP, Blue-transparent
Temp.	-65°C / +180°C



### Flexiform L HFJ & Flexiform LX HFJ

Flexiform L types use a 'profiled' dielectric to improve the attenuation when compared to the standard Flexiform cable. As with the standard HFJ version, Flexiform L HFJ provides a flexible, halogen free outer sheath.

Available in both Premium and Standard 'X' variants.

Conductor	SPC or SCCS
Dielectric	Profile-extruded PTFE
Shield	Tin-soaked, TPC braid
Sheath	HFS 80 T, Blue
Temp.	-40°C / +80°C



# Flexiform

## Habia Cable's range

### Flexiform LXF FJ

By reducing the gauge size of the braid wires, Flexiform LXF offers a reduced cost product with the same electrical performance. It should be noted that there is a reduction in the number / severity of bending that can be achieved with Flexiform LXF.

Conductor	SPC or SCCS
Dielectric	Profile-extruded PTFE
Shield	Foil Tin-soaked, TPC braid
Sheath	FEP, Blue-transparent
Temp.	-65°C / +180°C



### Flexiform SL FJ & Flexiform SLX FJ

Flexiform SL types use a 'profiled' dielectric to improve the attenuation when compared to the standard Flexiform cable. However unlike the L version which keeps the same sizes, Flexiform SL FJ uses this improved attenuation to offer a smaller cable OD with the same electrical performance as the standard FJ version, Flexiform L FJ provides a tough, yet thin-wall high temperature outer sheath.

Available in both Premium and Standard 'X' variants.

Conductor	SPC or SCCS
Dielectric	Profile-extruded PTFE
Shield	Tin-soaked, TPC braid
Sheath	FEP, Blue-transparent
Temp.	-65°C / +180°C



### Flexiform SL HFJ & Flexiform SLX HFJ

Flexiform SL types use a 'profiled' dielectric to improve the attenuation when compared to the standard Flexiform cable. However unlike the L version which keeps the same sizes, Flexiform SL HFJ uses this improved attenuation to offer a smaller cable OD with the same electrical performance as the standard HFJ version, Flexiform SL HFJ provides a flexible, halogen free outer sheath.

Available in both Premium and Standard 'X' variants.

Conductor	SPC or SCCS
Dielectric	Profile-extruded PTFE
Shield	Tin-soaked, TPC braid
Sheath	HFS 80 T, Blue
Temp.	-40°C / +80°C



### Flexiform SLXF FJ

As with Flexiform LXF, the braid wire size for Flexiform SLXF are reduced to offer a lower cost product with the same electrical performance. It should be noted that there is a reduction in the number / severity of bending that can be achieved with the Flexiform SLXF.

Conductor	SPC or SCCS
Dielectric	Profile-extruded PTFE
Shield	Foil Tin-soaked, TPC braid
Sheath	FEP, Blue-transparent
Temp.	-65°C / +180°C



### Flexiform SLXF HFJ

As with Flexiform LXF, the braid wire size for Flexiform SLXF are reduced to offer a lower cost product with the same electrical performance. It should be noted that there is a reduction in the number / severity of bending that can be achieved with the Flexiform SLXF.

Conductor	SPC or SCCS
Dielectric	Profile-extruded PTFE
Shield	Foil Tin-soaked, TPC braid
Sheath	HFS 80 T, Blue
Temp.	-40°C / +80°C

